

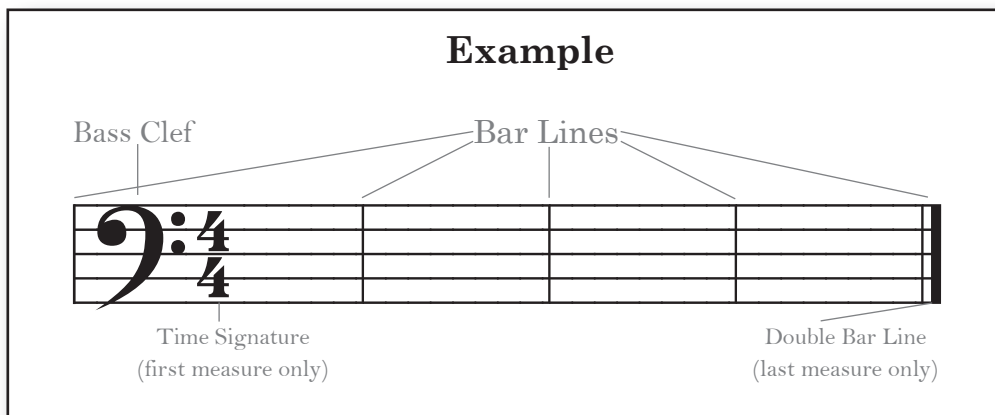
The Dragon Quest

How to Compose a Troll Song

Writing music is easy, but to do it right you must take care to follow all of the steps and be accurate. Use a sharp pencil with a good eraser. Mechanical pencils are best. There is space for you to compose your song on page 19.

1. Add bar lines - Music is written on five lines called a staff. Bar lines divide the staff into sections called measures (see the example at the bottom of the page). Take care that your bar lines go from the top line of the staff, to the bottom line of the staff. Draw bar lines to divide the staff into four equal sections. Do this for two staves so that you have a total of eight measures.

2. Add a clef symbol to the first measure of each staff - A clef symbol tells us which notes belong on which lines and spaces of the staff. Different instruments use different clefs. If you are unsure which clef to use, look at pages 16 and 17 where you can match a clef to the instrument you are writing for. If your instrument is not listed, you may ask your teacher which notes to use or choose to follow the directions for any instrument you see.



The Troll Song

3. Add a time signature - Each measure needs the same number of beats. For this song, we want four beats in each measure, so four will be the top number of your time signature. Let's make the bottom number a four also. Add a time signature to the first measure of the first staff only.

4. Add words - Think of a few words that you think a troll would sing. As a general rule, if you find it disgusting a troll would love it.

5. Add notes - Each syllable in your words should belong to at least one note. For example, if you wanted to sing the word "gobbledygook," you would need four notes, because there are four syllables in the word gob-ble-dy-gook.

Trolls only know two notes. Pages 16 and 17 will show you which notes to use for each instrument. Try playing the notes in different ways. Remember to use one note per syllable. You can use long notes and short notes (see the rhythm chart on page 18). Often, a long note is used at the end of a sentence or phrase.

Once you find something you like, play it a few times to be sure you can remember it. Then write the notes on the staff with the words under the notes. Make sure you have 4 beats per measure.

Be sure to place your notes carefully. It can be easy to make a space note look like a line note on accident and vice versa.

Continue adding words and notes until you have 8 measures.

6. Add a double bar line at the end - See the example on page 14.

7. Play it - You must play your song well to get past the troll on the bridge, so practice it carefully.